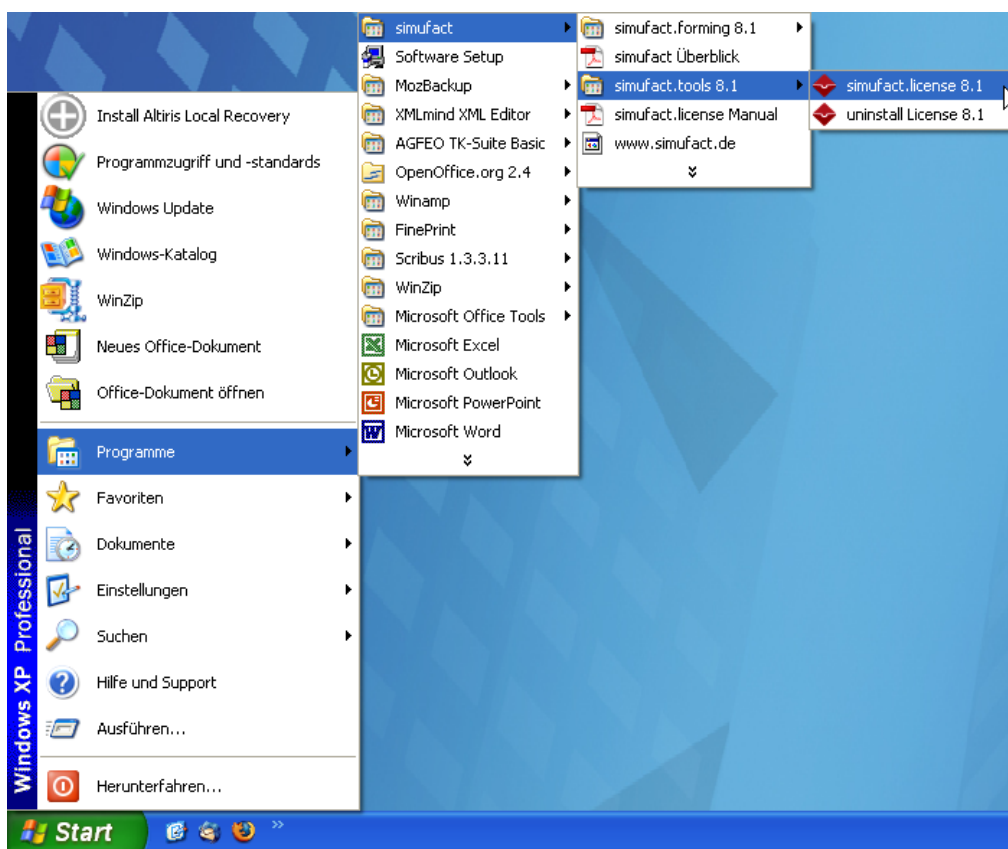


# Configuration of the license server

simufact.license 8.1

## 1. How to request a license from Simufact

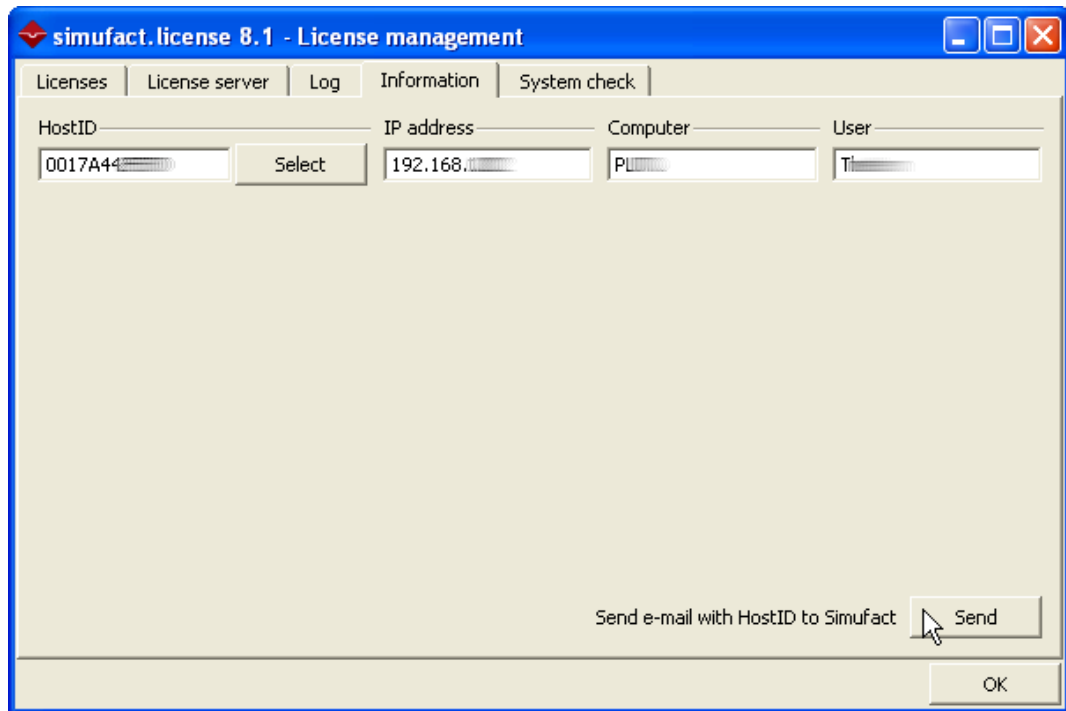
After the installation of Simufact.forming 8.1, the license manager Simufact.license 8.1 can be started with the Windows start menu:



In the lower right corner of the taskbar, the symbol for the license manager appears, please open it with a double-click.



The tab **Information** shows the Host-ID of the computer. It is possible to have more than one Host-ID's. **Select** shows you the available ID's. Normally, the address of the LAN connection is shown. There might be another entry for wireless LAN, especially for notebooks. Please select the address of the network interface card that is always active:



The button **Send** sends an automated license request for the selected Host-ID to support@simufact.de. After you have sent this request, you will get a license file with information on further proceedings with the license manager.

## 2. How to activate the license

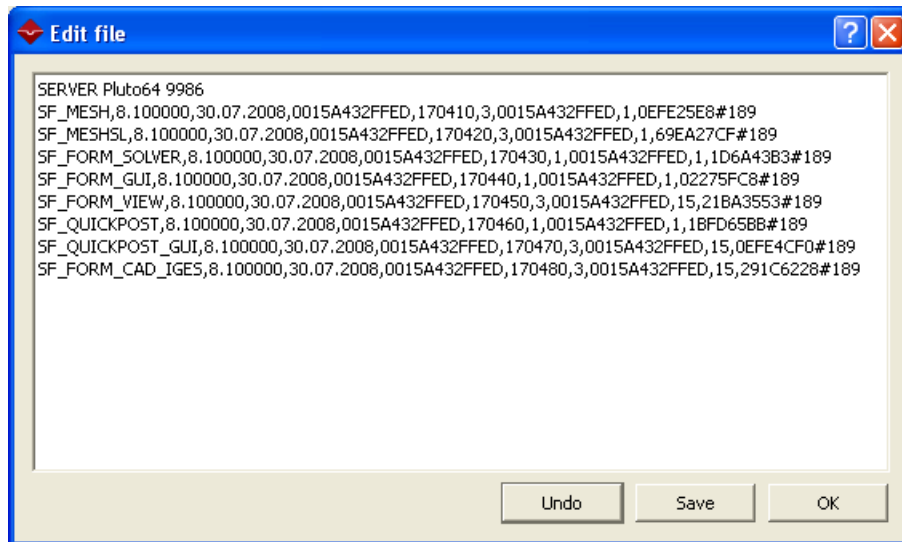
The following summary explains how a local license is activated. A local license means that you are running the license server on the same computer you work on. You can find further information in the user guide for Simufact.license 8.1. A local license is only valid for a single workplace (computer), it can not be used by other computers over the network.

### 2.1. Saving the license file to harddisk

After the successful installation of Simufact.forming 8.1 and Simufact.license 8.1 and a license request, you have to save the license file on your computer. The name and the directory of the license file are arbitrary (for example you can use C:\Program files\simufact\license\license.dat).

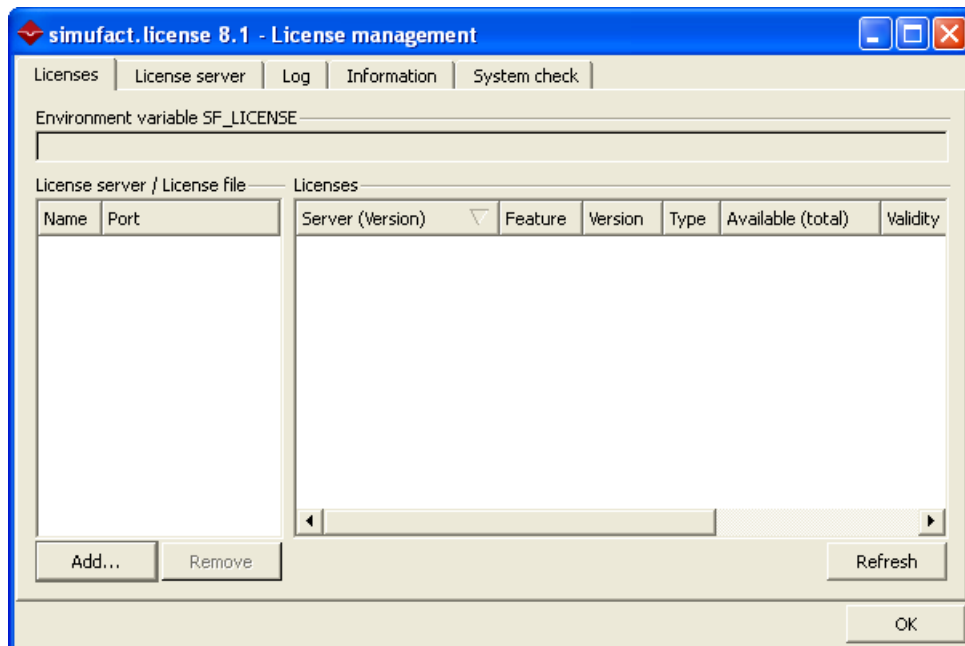
### 2.2. Contents of the license file

Normally, the license file contains only license keys for the licensed functions:



## 2.3. How to open the license manager

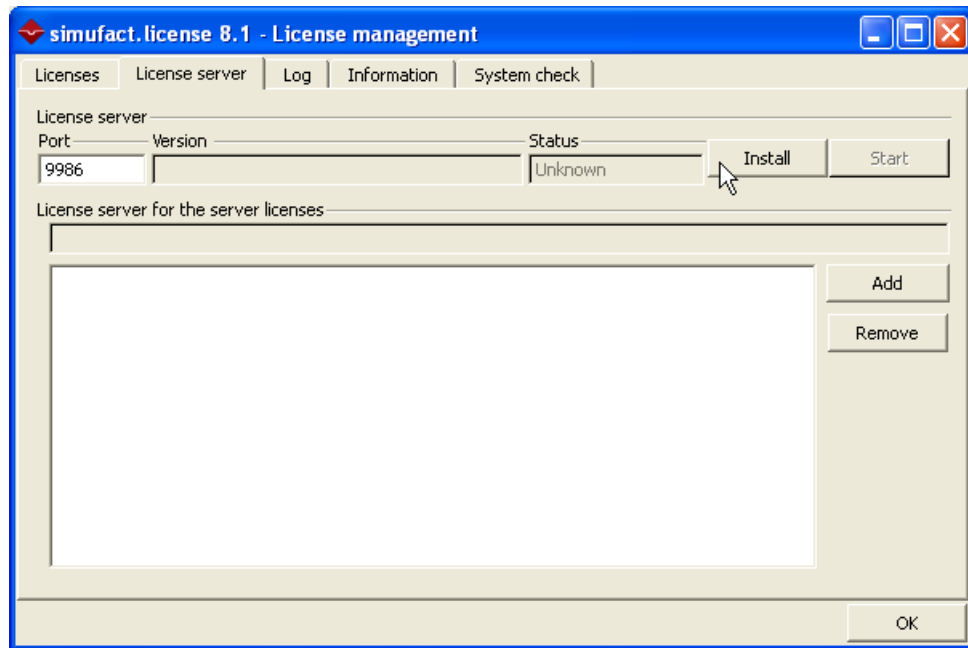
Open the license manager as explained above with the taskbar symbol. Open the **Licenses** tab.



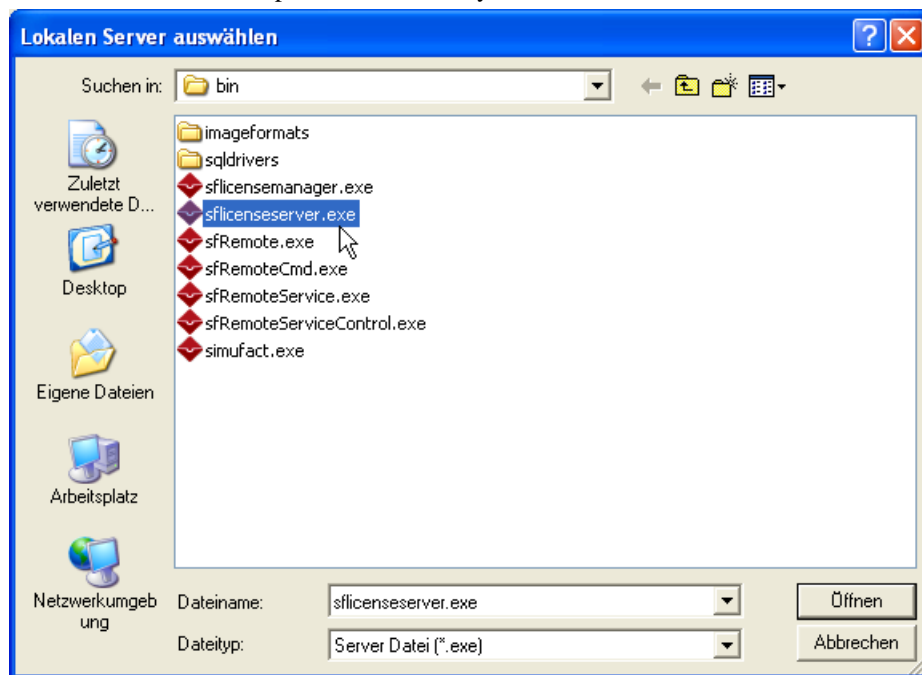
Delete all possibly existing entries in the left column by highlighting them with the mouse and clicking on **Remove**.

## 2.4. How to install the license server on the local computer

Open the **License server** tab and click on **Install** to install the license server. This is done at your local computer for local licenses.



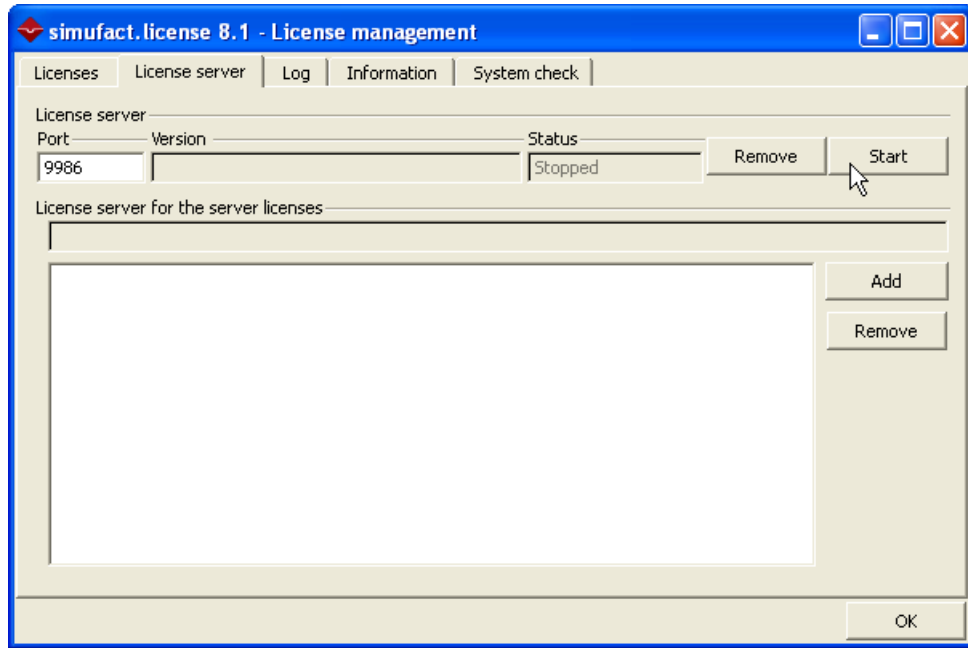
Select the file `sflicenseserver.exe` in the following dialog. The path to this file (`... \simufact\tools\8.1\bin`) is opened automatically.



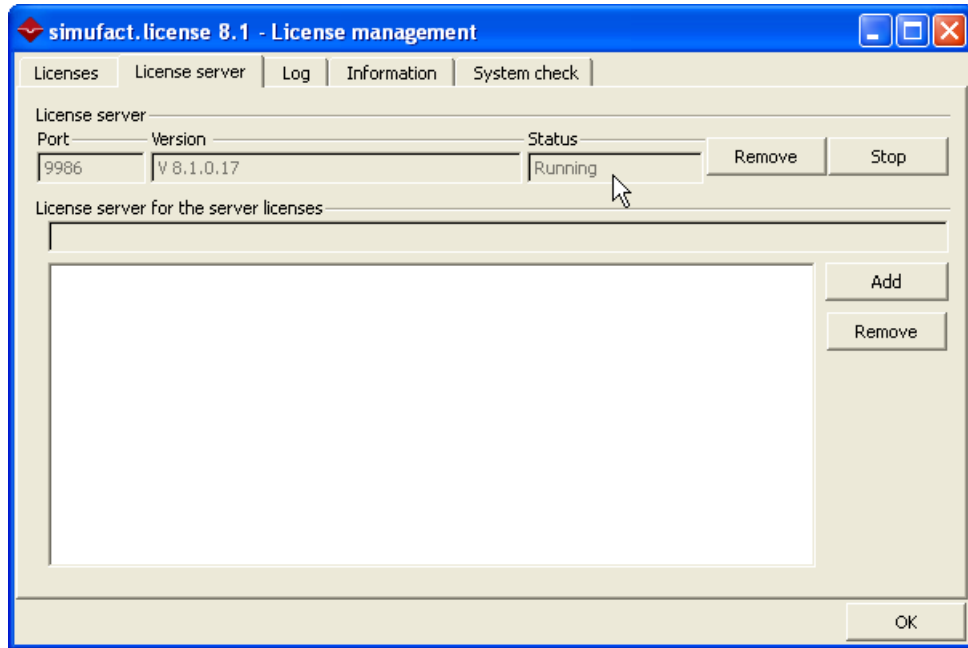
Confirm the selection with **Open**.

## 2.5. How to start the license server

The button **Start** is not grayed out anymore, so please click it to start the license server on your computer.

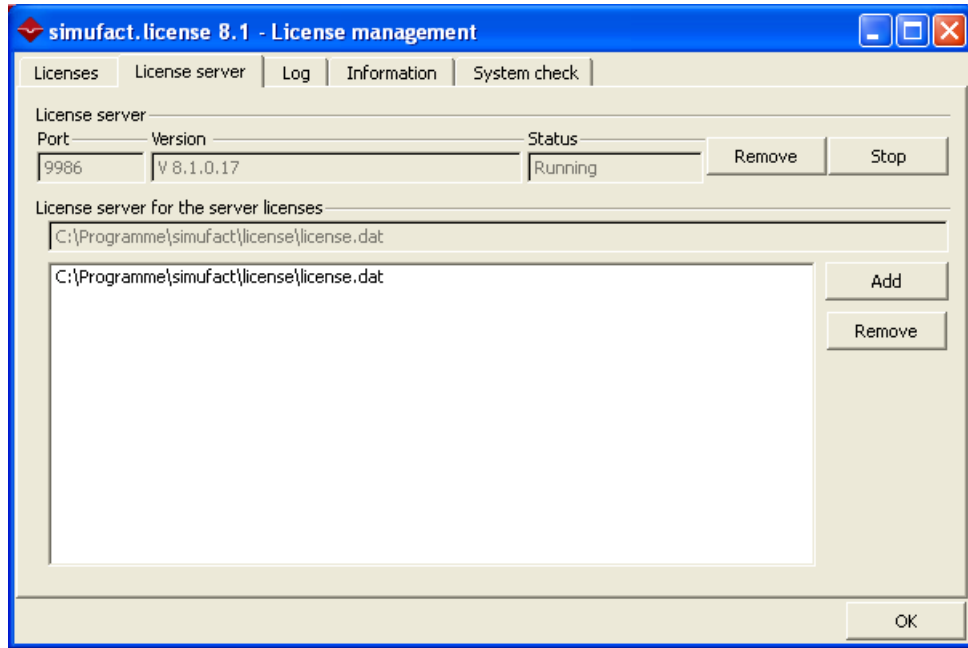


The status of the license server has changed to **Running**.



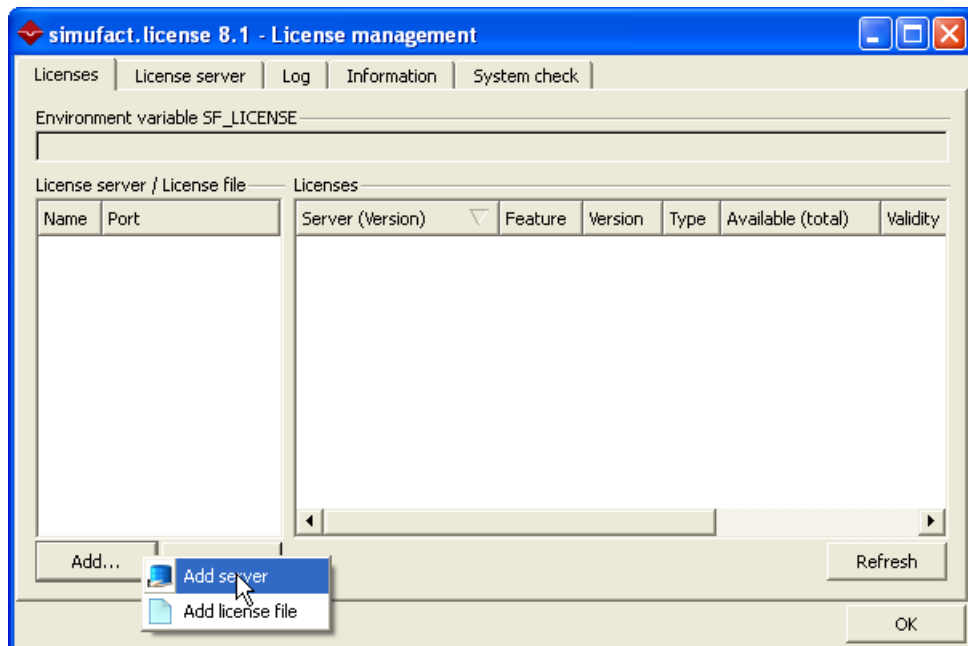
## 2.6. How to add the license file and path for the server license

Now you can establish the connection between the license server and the license file. Select the received license file with **Add** (e.g. C:\Program files\simufact\license\license.dat). The configured license server looks like this:

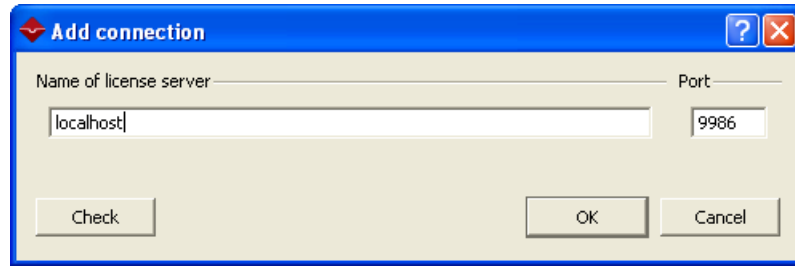


## 2.7. How to select the local licensing for the client

This step is necessary for the local licensing, if the license file does not contain a server entry (default for local licensing). The client is the program, whose licensing is managed by Simufact.license 8.1, e.g. Simufact.welding or Simufact.forming. Open the **Licenses** tab. Click on **Add** and select **Add server** to establish a connection between the client and the local license server.

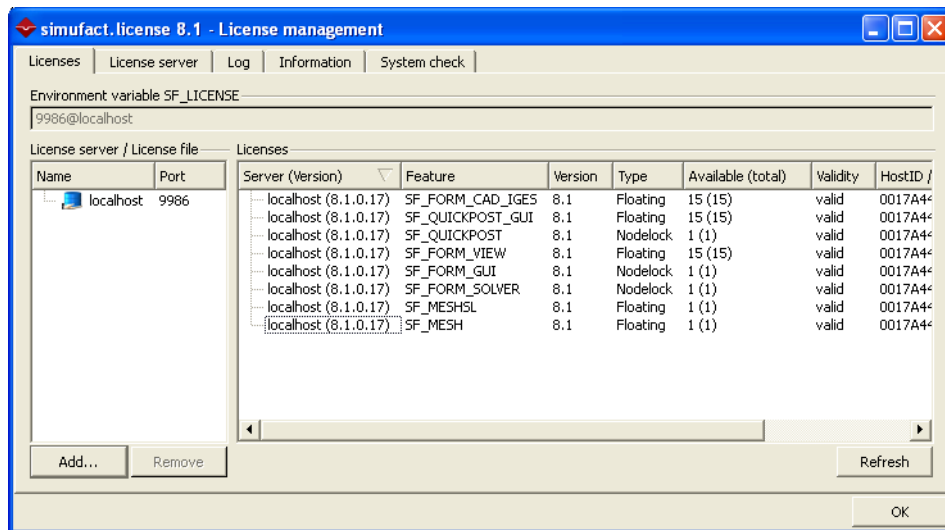


Name the local license server as you like, for example your computer's network name (this manual will assume you named it *localhost*) in the following dialog and confirm with **OK**.



## 2.8. Final Check

The licenses included with the license file should be shown in the right window automatically. Alternatively, you can highlight the entry *localhost* and use **Refresh** to manually show the license keys. Check the column **Validity** whether your licenses are working properly.



If you are satisfied with all settings, leave the license manager with a click on **OK** in the bottom right. Your modifications are saved and you can start Simufact.forming.